

# CHOICES FOR GROUPON MENU

## Miso soup



## SALAD



GREEN SALAD OR SEAWEED SALAD

## SIDE DISH



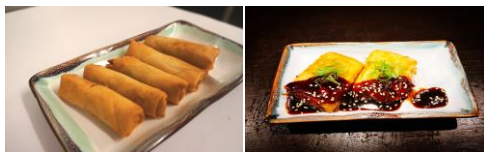
EDAMAME OR LOTUS ROOT

## SUSHI



SALMON AVOCADO ROLL

## IPPIN



VEGE SPRING ROLL OR TOFU DENGAKU

## MAIN DISH



( CHICKEN TERIYAKI OR TAKOYAKI OR SQUID RING )

## YASAI



STIR FRIED VEGETABLE

**DESSERT-ICE CREAM**



CHOCOLATE PUFF OR STRAWBERRY PUFF