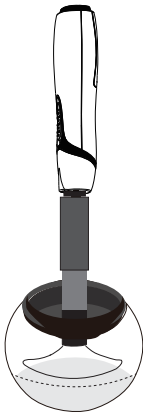


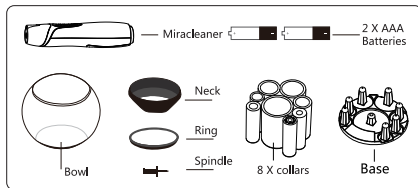
User manual



INTRODUCTION:

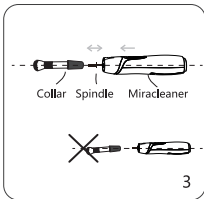
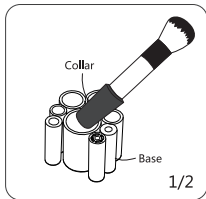
PROFESSIONALS RECOMMEND CLEANING MAKEUP BRUSHES EVERY TWO TO FOUR WEEKS,BUT TRADITIONAL CLEANING METHODS ARE MESSY,LABORIOUS AND CAN LEAVE BRUSHES WET AND UNUSABLE FOR UP TO 24 HOURS. THIS MACHINE LEAVES BRUSHES CLEAN AND DRY- READY TO RE-USE IN JUST 30 SECONDS! GET THE MOST FROM YOUR MAKEUP BRUSHES WITH IT.

PLEASE NOTE THAT BOTH MAKEUP BRUSHES AND THIS DEVICE ARE DELICATE - PLEASE CAREFULLY READ AND FOLLOW THESE INSTRUCTIONS BEFORE STARTING AND KEEP THEM FOR FUTURE REFERENCE.



BEFORE FIRST USE:

1. SELECT BRUSH,NOTE WHAT TYPE OF MAKEUP IS ON THE BRUSH-IS IT WATER SOLUBLE OR NON-SOLUBLE?
2. NOW SELECT THE BEST FITTING COLLAR AND PUSH THE BRUSH IN,UNTIL IT IS HELD FIRM AND STRAIGHT.REMOVE THE COLLAR AND BRUSH FROM THE BASE.

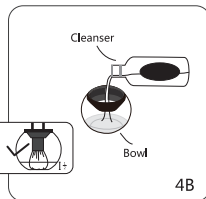
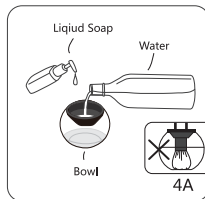


3. PUSH THE SPINDLE INTO THE SQUARE HOLE AT THE BOTTOM OF THE COLLAR, THEN CLICK THE OTHER END INTO THE MACHINE. CHECK THE MACHINE IS SECURELY ATTACHED TO THE SPINDLE, COLLAR AND BRUSH IN A STRAIGHT LINE. ADJUST THE BRUSH IF NECESSARY. ANY SLIGHT LEANING WILL AFFECT THE ABILITY OF THE MACHINE TO CLEAN AND DRY, AND MAY CAUSE IT TO RATTLE.

4. FILL THE BOWL:

A. FOR WATER-SOLUBLE MAKEUP (FOR EXAMPLE: BLUSHER, ZER AND LOOSE POWDER), SQUEEZE A SMALL AMOUNT (4ML) OF YOUR PREFERRED ANTI-BACTERIAL LIQUID SOAP INTO THE BOWL. PLEASE CONSULT YOUR BRUSH MANUFACTURER FOR ADVICE ON THE BEST CLEANER TO USE. ADD WATER TO THE BOWL UNTIL WATER LEVEL IS HALF THE HEIGHT OF THE BRUSH BRISTLES YOU WISH TO CLEAN. IF YOU ARE UNSURE WHETHER THE MAKEUP IS WATER SOLUBLE, TRY THIS STEP FIRST AND IF THE BRUSH IS NOT TOTALLY CLEAN, FOLLOW THE NON-WATER SOLUBLE MAKEUP INSTRUCTIONS. B. FOR NON-WATER SOLUBLE MAKEUP (FOR EXAMPLE FOUNDATION), ADD 10-20ML OF MAKEUP BRUSH CLEANSER, DEPENDING

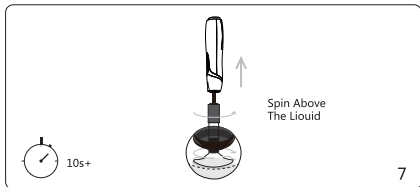
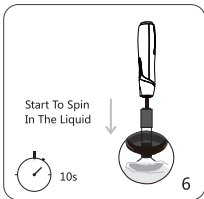
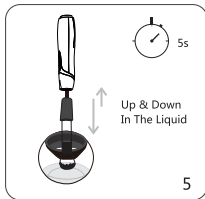
ON BRUSH SIZE, INTO THE BOWL. ENSURE THE SOLUTION LEVEL IS LESS THAN HALF THE HEIGHT OF THE BRUSH BRISTLES YOU WISH TO CLEAN.



5. SOFTLY DUNK THE BRUSH UP AND DOWN IN THE LIQUID, PRESSING THE BRUSH LIGHTLY INTO THE BOWL TO OPEN THE BRISTLES SLIGHTLY. WORK LIQUID INTO THE DAMAGING THE BRUSH DO NOT ALLOW THE METAL FERRULE GO UNDER THE WATER/CLEANSER LEVEL.

6. AFTER 5 SECONDS: WHILST GENTLY PRESSING THE BRUSH DOWN IN THE BOWL, SWITCH ON THE DEVICE. GENTLY LIFT THE BRUSH WILL START TO SPIN RAPIDLY, CAUSING THE LIQUID TO SPLASH UP. SLOWLY MOVE THE BRUSH UP AND DOWN FOR 10 SECONDS, KEEPING THE BRUSH UNDERNEATH THE LIQUID LEVEL AT ALL TIMES. AT THIS STAGE, IF THE BRUSH IS NOT ALIGNED STRAIGHT, IT MIGHT START TO WOBBLE FROM SIDE TO SIDE AND RATTLE AGAINST THE BOWL. IF THIS HAPPENS, LOOSEN YOUR GRIP AND PLACE A FINGER GENTLY ON THE TOP OF IT. IF THIS DOES NOT RESOLVE THE PROBLEM, SWITCH OFF

AND CONTACT US .

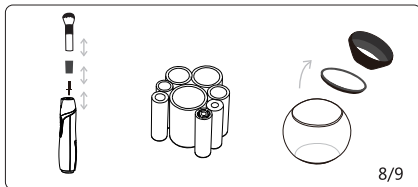


7. AFTER 10 SECONDS - GRADUALLY LIFT THE SPINNING BRUSH OUT OF THE LIQUID (BUT KEEP INSIDE THE BOWL) AND LEAVE IT TO SPIN ABOVE THE LIQUID LEVEL. AS THE BRUSH LIFTS FROM THE DIRTY LIQUID, THE BRISTLES WILL SPREAD OUT AND YOU WILL SEE THE WATER/CLEANSER AND DIRT BEING SPUN OUT OF THE BRUSH. LEAVE THE BRUSH SPINNING ABOVE THE LIQUID.

AFTER 10 SECONDS SWITCH OFF THE. REPEAT THIS STEP IF YOU WOULD LIKE IT DRIER. RESHAPE THE BRISTLES WITH YOUR FINGERS IF NECESSARY. WARNING: DO NOT OVER-SPIN AS THIS MAY DAMAGE THE BRUSH. WE ADVISE YOU NOT TO SPIN DRY CONTINUOUSLY FOR MORE THAN 10 SECONDS AT A TIME, THEN CHECK THE BRUSH AND IF STILL WET, REPEAT.

8. DETACH THE SPINDLE FROM THE MACHINE AND THE COLLAR FROM THE SPINDLE REMOVE BRUSH FROM COLLAR. PUT COLLAR AND BACK ON THE BASE.

9. REMOVE THE NECK FROM THE BOWL, SEPARATE THE RING FROM THE NECK, THEN WASH THE BOWL, NECK AND RING BY HAND WITH SOAP AND WATER.



BATTERIES:

ONLY AAA BATTERIES SHOULD BE USED. DIFFERENT TYPES OF BATTERIES OR NEW AND USED NOT TO BE SHORT-CIRCUITED. REMOVE BATTERIES BEFORE STORING THE PRODUCT FOR EXTENDED PERIODS OF TIME. DO NOT LEAVE DISCHARGED BATTERIES IN THE PRODUCT AS THEY MAY LEAK AND CAUSE

CORROSION. DONOT DISPOSE OF OLD BATTERIESIN A FIRE AS THEY MAYEXPLODE. DO NOT OPEN OR DISMANTLE THE BATTERIES.RELEASED ELECTROLYTE FROM THE BATTERIES ISCORROSIVE AND MAY CAUSE BURNS OR INJURY TO THE EYESOR SKIN. THE ELECTROLYTE MAY BE TOXIC IF SWALLOWED. EXERCISE CARE WHEN HANDLING THE BATTERIES. DO NOT ALLOW CONDUCTIVE MATERIALS SUCH AS RINGS, BRACELETS CIRCUIT MAY CAUSE THE BATTERIES AND/OR CONDUCTIVE1ATERIAL TO OVERHEAT AND CAUSE BURNS.

CORRECT DISPOSAL OF THIS PRODUCT:

PLEASE RECYCLE USED BATTERIES AT YOUR NEAREST RECYCLING CENTRE. THIS SYMBOL ON THE PRODUCT AND ACCOMPANYING DOCUMENTS MEANS THAT USED ELECTRICAL ANDELECTRONIC EQUIPMENT (WEEE) SHOULD NOT BEMIXED WITH GENERAL HOUSEHOLD WASTE. FOR PROPER TREATMENT, RECOVERY AND RECYCLING.PLEASE TAKE THIS PRODUCT TO DESIGNATED COLLECTION POINTS WHERE IT WILL BE ACCEPTED FREE OF CHARGE.ALTERNATIVELY,IN SOME COUNTRIES, YOU MAY BE ABLE TORETURN YOUR PRODUCTS TO YOUR LOCAL RETAILER UPONPURCHASE OF AN EQUIVALENT NEW PRODUCT. DISPOSINGOF THIS PRODUCT CORRECTLY WILL HELP SAVE VALUABLE RESOURCES AND PREVENT ANY POTENTIAL NEGATIVE EFFECTS ON HUMAN HEALTH AND THE ENVIRONMENT WHICH MIGHT OTHERWISE ARISE FROM INAPPROPRIATE WASTE HANDLING. PLEASE CONTACT YOUR LOCAL AUTHORITY FOR FURTHER DETAILS OF YOUR NEAREST DESIGNATED COLLECTION POINT. PENALTIES MAY BE APPLICABLE FOR INCORRECT DISPOSAL OF THIS WASTE,IN ACCORDANCE WITH YOUR NATIONAL LEGISLATION. FOR BUSINESS USERSIN THE EUROPEAN UNION: IF YOU WISH TO DISCARD ELECTRICALAND ELECTRONIC EQUIPMENT, PLEASE CONTACT YOUR DEALER OR SUPPLIER FOR FURTHER INFORMATION.

CE MARKING:

EU - DECLARATION OF CONFORMITY: WE DECLARES THAT THIS MACHINE COMPLIES WITH THE ESSENTIAL REQUIREMENTS AND OTHER RELEVANT PROVISIONS OF DIRECTIVE 1999/5/EC.

WARRANTY:

THE LIMITED WARRANTY LASTS 1YEAR FROM THE DATE OF PURCHASE. PLEASE KEEP THE ORIGINAL RECEIPT FOR WARRANTY SERVICE. FOR SERVICE OR REPAIR DURING THIS WARRANTY PERIOD.IMPORTANT: THIS WARRANTY DOES NOT COVER DAMAGE RESULTING FROM ACCIDENTS, MISUSE, ALTERATIONS, ABUSE,LACK OF REASONABLE CARE OR USE OTHER THAN DESCRIBED IN THESE INSTRUCTIONS. OR PERFORMANCE OF SERVICE OR REPAIRS BY AN UNAUTHORISED SERVICE CENTRE. THIS WARRANTYIS VALID ONLY ON MERCHANDISE SOLD BY AUTHORISED RETAILERS. NOTE, THE ITEM MUST BE THOROUGHLY CLEANED PRIOR TO RETURN.

WARNINGS AND LEGAL:

THIS IS NOT A TOY. THIS APPLIANCE CAN ONLY BE USED BY CHILDREN AGED FROM 8 YEARS AND ABOVE AND PERSONS WITH REDUCED PHYSICAL, SENSORY OR MENTAL CAPABILITIES OR LACK OF EXPERIENCE AND KNOWLEDGE. IF THEY HAVE BEEN GIVEN SUPERVISION OR INSTRUCTION CONCERNING USE OF THE APPLIANCE IN A SAFE WAY, AND UNDERSTAND THE HAZARDS INVOLVED. CHILDREN SHALL NOT PLAY WITH THE APPLIANCE. CLEANING AND USER MAINTENANCE SHALL NOT BE MADE BY CHILDREN WITHOUT SUPERVISION. THIS PRODUCT CONTAINS GLASS WHICH CAN BE DANGEROUS. PLEASE STORE WITH CARE AND OUT OF REACH OF CHILDREN. ALWAYS CONSULT THE BRUSH MANUFACTURER' S INSTRUCTIONS BEFORE SELECTING THE BEST LIQUID ANTI-BACTERIAL SOAP WHEN CLEANING MAKEUP BRUSHES. BEFORE USE, THIS PRODUCT MUST BE PROPERLY SET UP. DO NOT TAMPER WITH

ANY INTERNAL COMPONENTS.THERE ARE NO USERSERVICEABLE PARTS INSIDE THE UNIT AND OPENING THE PRODUCT WILL INVALIDATE THE WARRANTY. DO NOT ATTEMPT TO REPAIR THE PRODUCT YOURSELF. CONTACT US IF THE PRODUCT REQUIRES SERVICING. DO NOT PLACE ANY PART OF THE PRODUCT NEAR HEAT SOURCES SUCH AS RADIATORS, COOKERS, ETC. DO NOT USE THE FOR ANYTHING OTHER THAN ITS INTENDED USE. DO NOT OPEN THE PRODUCT OTHER THAN TO REPLACE THE BATTERIES. DO NOT ALLOW LIQUID TO GETINSIDE. THE TECHNICAL SPECIFICATION FOR THIS PRODUCT AND THE CONTENTS OF THE USER MANUAL ARE SUBJECT TO CHANGE WITHOUT NOTICE. WE CANNOT TAKE ANY RESPONSIBILITY FOR ANY DAMAGE TO BRUSHES CLEANED USING.

MAKEUP BRUSH CLEANSER:

FLAMMABLE LIQUID AND VAPOUR. KEEP AWAY FROM HEAT, SPARKS, OPEN FLAMES, HOT SURFACES. NO SMOKING. KEEP CONTAINER TIGHTLY CLOSED. STORE IN A WELL-VENTILATED, COOL, DRY PLACE OUT OF SUNLIGHT. MAY CAUSE LUNG DAMAGE IF SWALLOWED. DO NOT SWALLOW,INHALE OR ALLOW CONTACT WITH EYES. IF IN EYES, RINSE CAUTIOUSLY WITH WATER FOR SEVERAL MINUTES.IF SWALLOWED, DO NOT INDUCE VOMITING, SEEK MEDICAL ADVICE IMMEDIATELY AND SHOW THIS LABEL. AVOID PROLONGED CONTACT WITH SKIN. NOT A TOY. KEEP OUT OF REACH OF CHILDREN. USE AS DIRECTED.